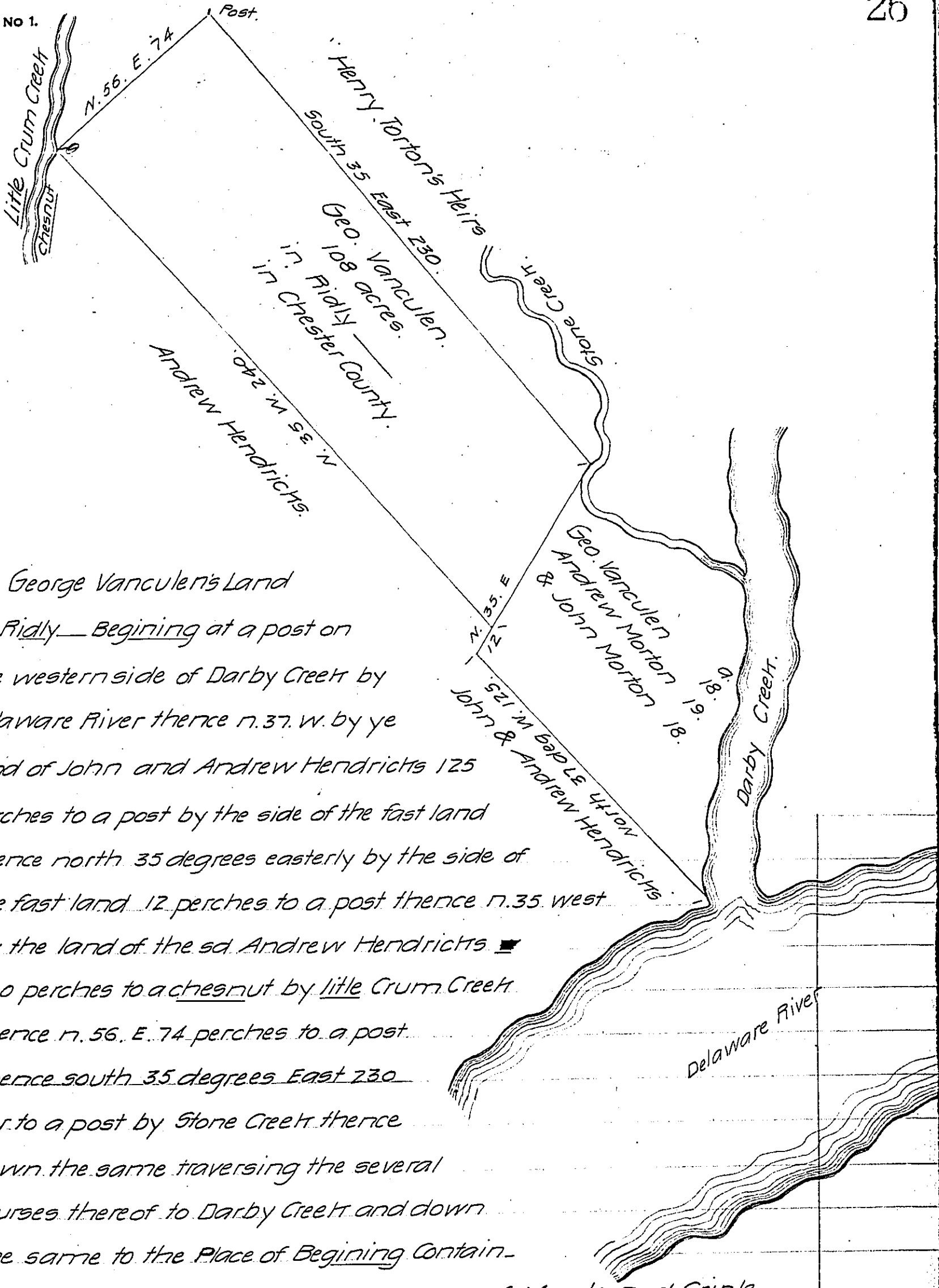


FORM NO 1.



George Vanculen's Land
 in Ridly— Beginning at a post on
 the western side of Darby Creek by
 Delaware River thence n. 37. w. by ye
 land of John and Andrew Hendricks 125
 perches to a post by the side of the fast land
 thence north 35 degrees easterly by the side of
 the fast land 12 perches to a post thence n. 35 west
 by the land of the sd Andrew Hendricks 125
 240 perches to a chesnut by little Crum Creek
 thence n. 56. E. 74 perches to a post
 thence south 35 degrees East 230
 per. to a post by Stone Creek thence
 down the same traversing the several
 Courses thereof to Darby Creek and down
 the same to the Place of Beginning Contain-
 ing 108 acres of fast land and 55 acres of Marsh and Cripple
 Resurveyed the 8th of 2d mo. 1714.

Pr. Isaac Taylor

IN TESTIMONY that the above is a copy of the original remaining on file in
 the Department of Internal Affairs of Pennsylvania, made
 conformably to an Act of Assembly approved the 16th day of
 February, 1833, I have hereunto set my Hand and caused
 the Seal of said Department to be affixed at Harrisburg,
 this seventeenth day of October 1907

Henry Howard
 Secretary of Internal Affairs.